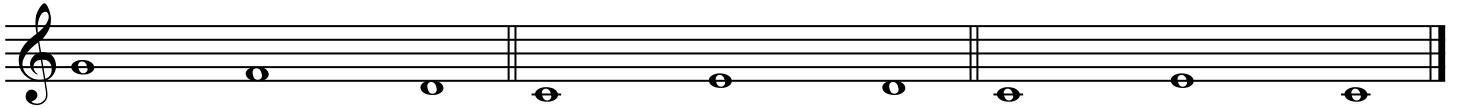


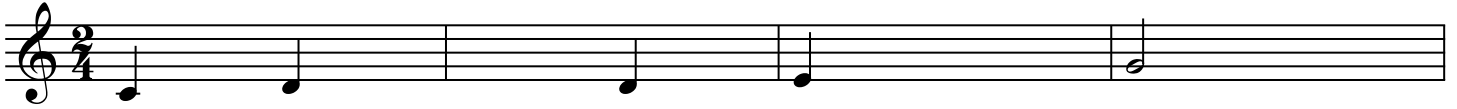
Gehoorvorming V1

AMV cursus L. de Lil

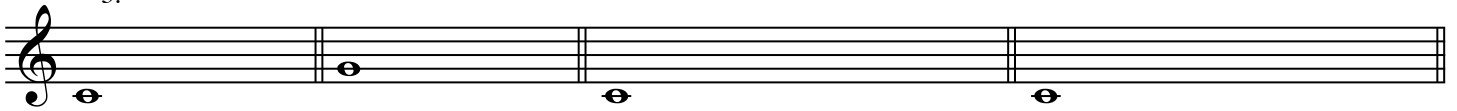
1.



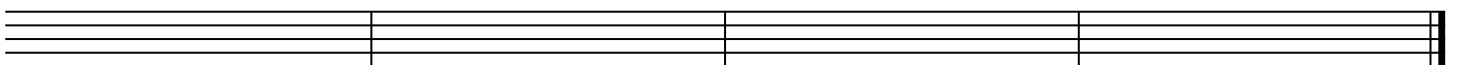
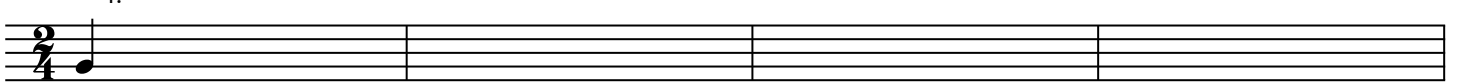
2.



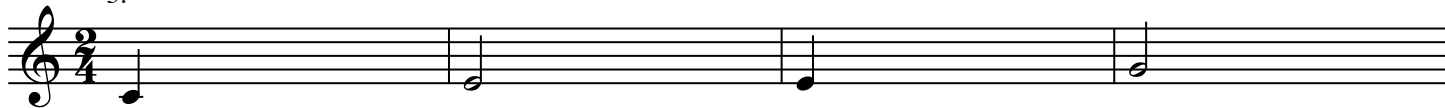
3.



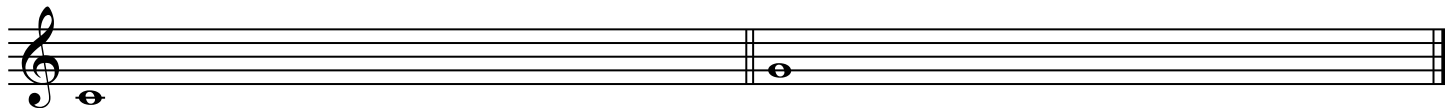
4.



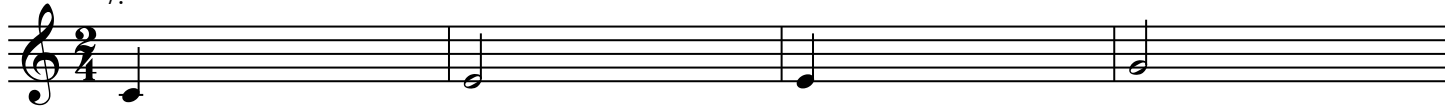
5.



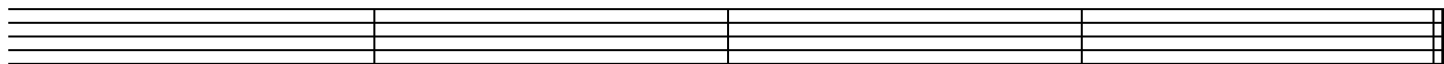
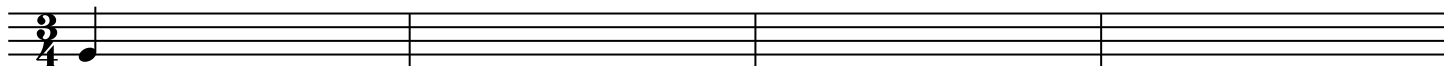
6.



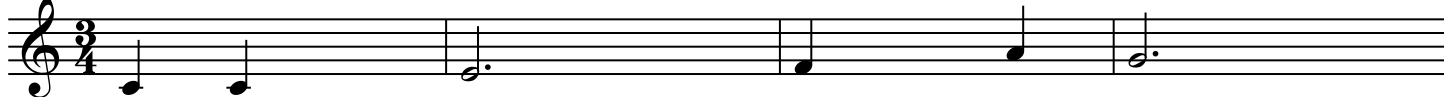
7.



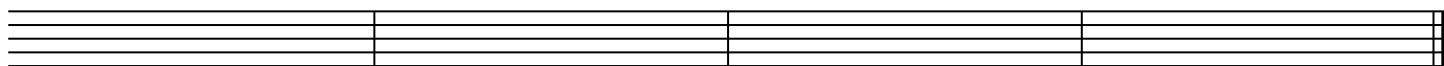
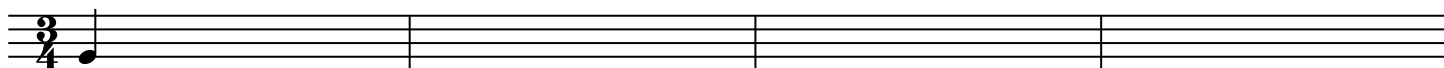
8.



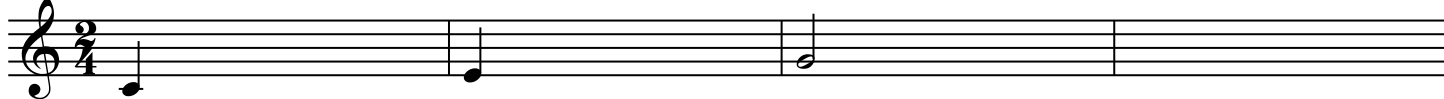
9.



10.



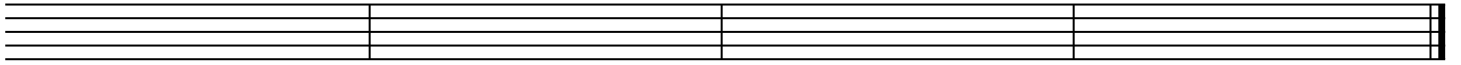
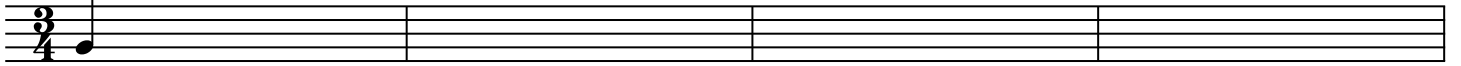
11.



12.



13.



14.



15.

Exercise 15 consists of two empty musical staves. The top staff is in 2/4 time, indicated by the time signature. The bottom staff is also empty.

16.

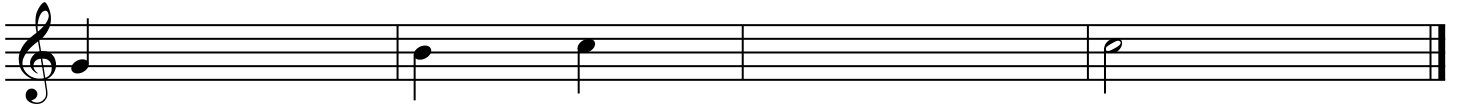
Exercise 16 consists of two musical staves in 2/4 time. The top staff contains four half notes: C4, E4, G4, and B4. The bottom staff contains four half notes: C4, E4, G4, and B4.

17.

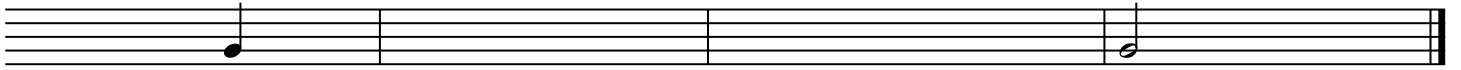
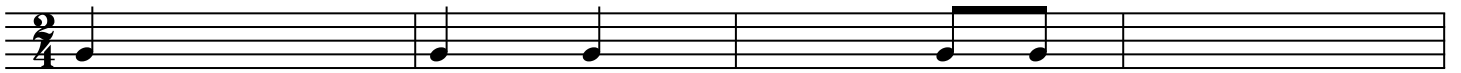
Exercise 17 consists of two empty musical staves. The top staff is in 3/4 time, indicated by the time signature. The bottom staff is also empty.

18.

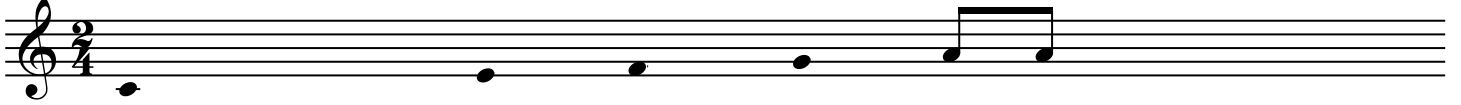
Exercise 18 consists of two musical staves in 2/4 time. The top staff contains four quarter notes: C4, E4, G4, and B4. The bottom staff contains four quarter notes: C4, E4, G4, and B4.



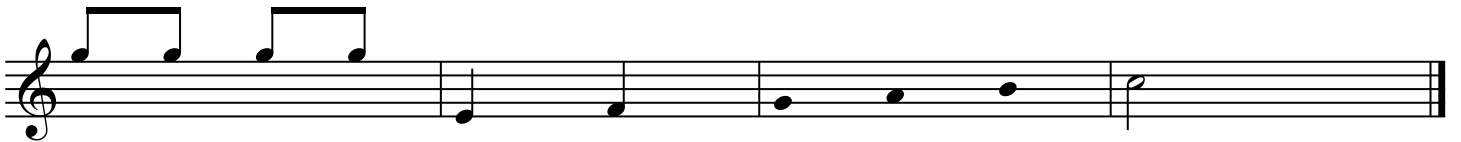
19.



20.



21.



22.

Exercise 22 consists of two staves in 2/4 time. The first staff begins with a quarter note on G4. The second staff is empty.

23.

Exercise 23 consists of two staves in 2/4 time. The first staff contains a quarter rest, a quarter note on G4, a quarter note on A4, a quarter note on B4, and a quarter rest. The second staff continues with a quarter rest, an eighth note on G4, an eighth note on A4, a quarter note on B4, a quarter rest, an eighth note on G4, an eighth note on A4, a quarter note on B4, and a quarter rest.

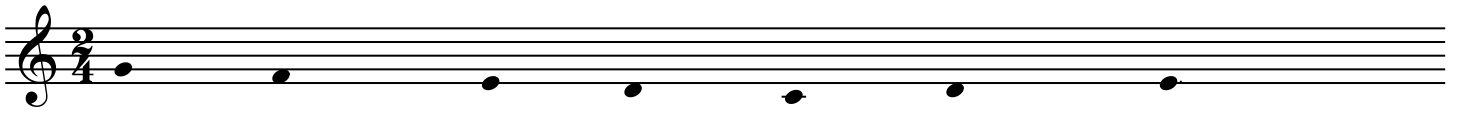
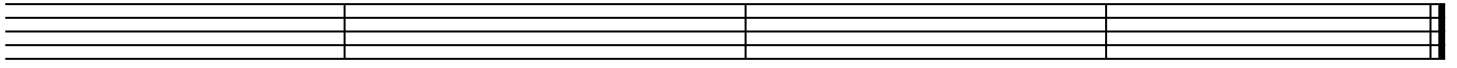
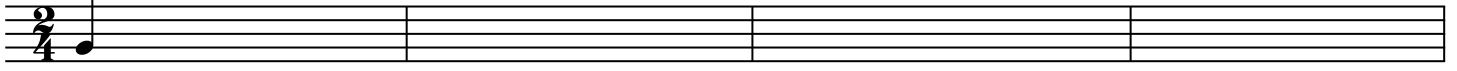
24.

Exercise 24 consists of two staves in 2/4 time. The first staff starts with a treble clef and a whole note on G4. The second staff continues with whole notes on G4, A4, and B4.

25.

Exercise 25 consists of two staves in 3/4 time. The first staff contains a sequence of notes: quarter note on G4, quarter note on A4, quarter note on B4, quarter note on C5, quarter note on B4, quarter note on A4. The second staff continues with: quarter note on G4, quarter note on A4, quarter note on B4, quarter note on C5, quarter note on B4, quarter note on A4.

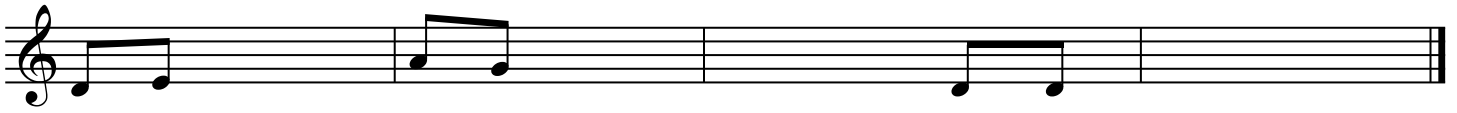
26.



28.



29.



30.

Musical notation for exercise 30, measures 1-4. The first staff is in 2/4 time and begins with a quarter note on G4. The second staff is empty.

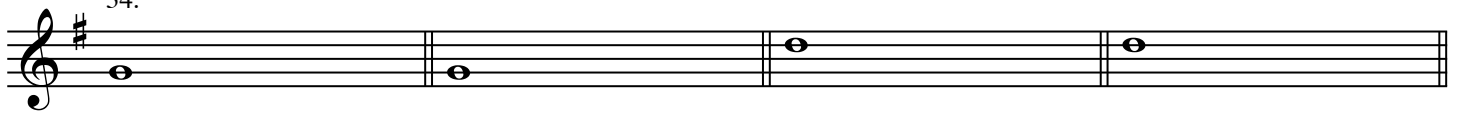
31.

Musical notation for exercise 31, measures 1-8. The first staff is in 3/4 time and begins with a quarter note on G4. The second staff continues the melody. The third staff is in 2/4 time and continues the melody. The fourth staff continues the melody with eighth notes.

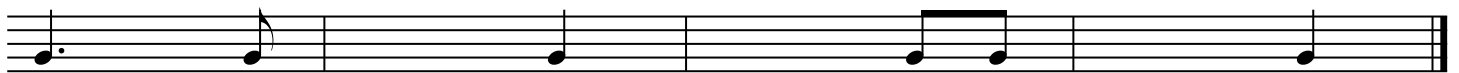
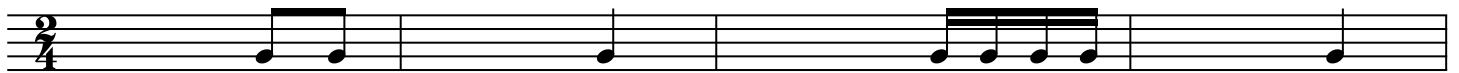
33.

Musical notation for exercise 33, measures 1-2. The first staff is in 2/4 time and begins with a whole note on G4. The second staff continues with a whole note on G4.

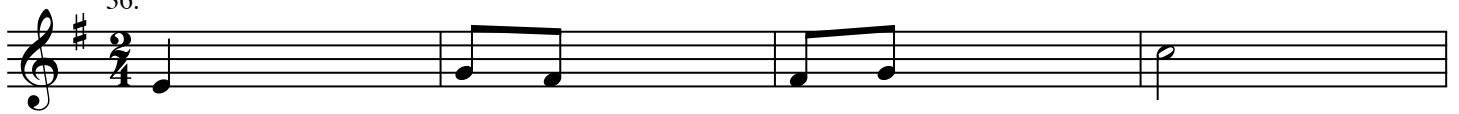
34.



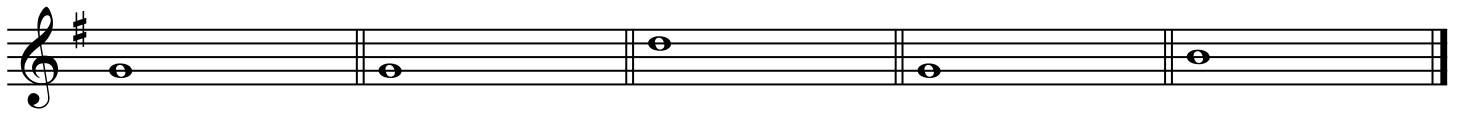
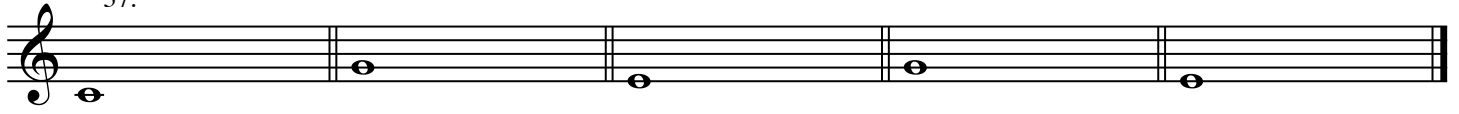
35. anapest of dactylus ?

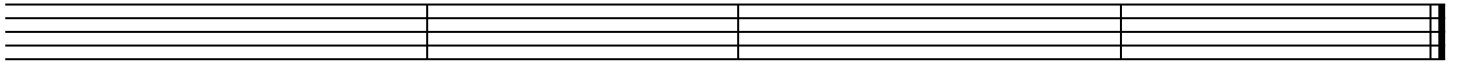


36.



37.





48.

Musical notation for exercise 48, consisting of two staves. The top staff is in 2/4 time and contains a single quarter note on the first line. The bottom staff is empty.

49.

Musical notation for exercise 49, consisting of two staves in 2/4 time. The top staff contains a quarter note on the first line, followed by a quarter rest, a quarter note on the second line, and a quarter note on the third line. The bottom staff contains a quarter note on the second line, followed by a quarter note on the third line, a quarter note on the fourth line, and a half note on the fourth line.

50.

Musical notation for exercise 50, consisting of two staves in 3/4 time. The top staff contains a single quarter note on the first line. The bottom staff is empty.

51.

Musical notation for exercise 51, consisting of two staves in 2/4 time. The top staff contains a quarter note on the first line, a quarter note on the second line, a quarter note on the second line, a quarter note on the second line, and a quarter note on the second line. The bottom staff contains a quarter note on the second line, followed by a quarter note on the second line, a quarter note on the second line, and a quarter note on the second line.

52.

Exercise 52 consists of two staves of music in 3/4 time with a key signature of one flat. The first staff contains measures 1 and 2, with notes G4, A4, B4, C5, B4, A4, G4. The second staff continues with notes G4, F4, E4, D4, C4.

53.

Exercise 53 consists of two staves of music in 2/4 time with a key signature of one sharp. The first staff contains measures 1 and 2, with notes C5, D5, E5, D5, C5. The second staff continues with notes B4, A4, G4, F4, E4, D4, C4.

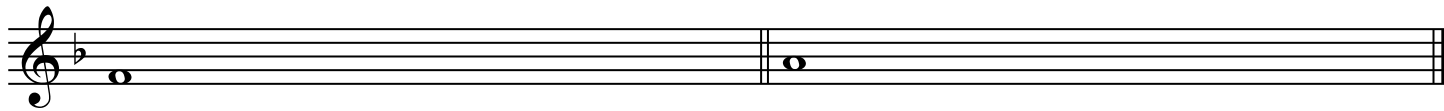
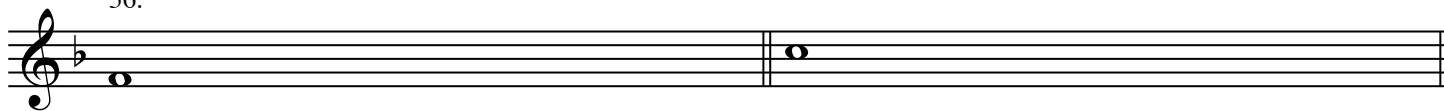
54.

Exercise 54 consists of two staves of music in 2/4 time. The first staff contains measures 1 and 2, with notes C4, D4, E4, F4, G4, A4, B4, C5. The second staff is empty.

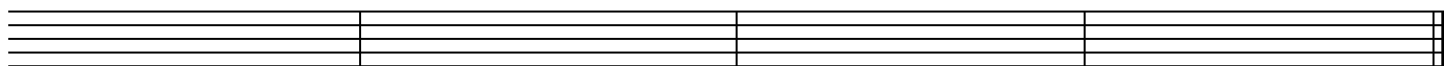
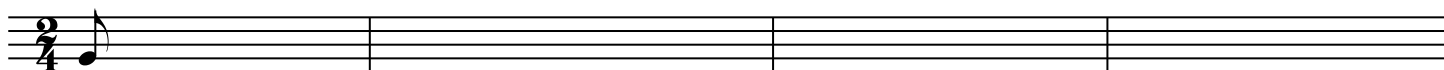
55.

Exercise 55 consists of two staves of music in 2/4 time with a key signature of one sharp. The first staff contains measures 1 and 2, with notes C4, D4, E4, F4, G4, A4, B4, C5. The second staff continues with notes B4, A4, G4, F4, E4, D4, C4.

56.



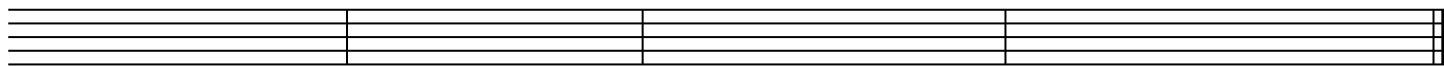
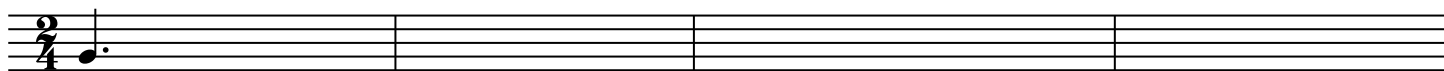
57.



58.



59.



60.

